

Carbon Reduction Commitment: impact of early adopter measures

Presenter


Howard Stark



Introduction

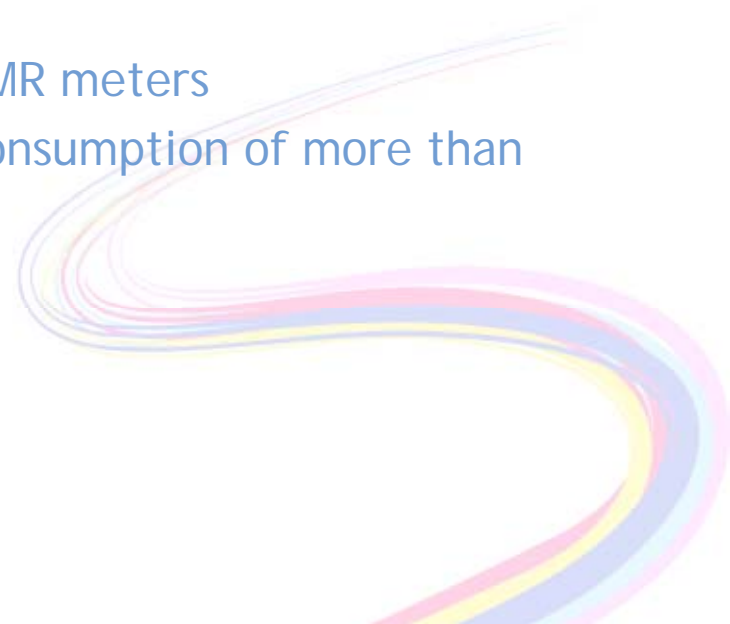
- Using voluntary AMR metering to improve league table position and funds recycling.
- Capitalising on the energy data to identify energy waste reducing costs, emissions and improving league table position.

CRC and metering

- You are on the CRC radar if you have one or more half hourly settled meters
 - The qualifying criterion for CRC is if an organisation consumes 6,000 MWh or more of electricity from half hourly settled meters during the qualifying year (2008)
 - If you qualify, then 90% of your total footprint emissions must be regulated by the CRC
- 

Total footprint emissions

- To capture your total footprint emissions, all emissions from core sources must be included
- Core sources include:
 - electricity half hourly meters
 - all daily-read gas meters
 - all gas consumed through AMR meters
 - all non-daily metered gas consumption of more than 73,200 kWh per annum



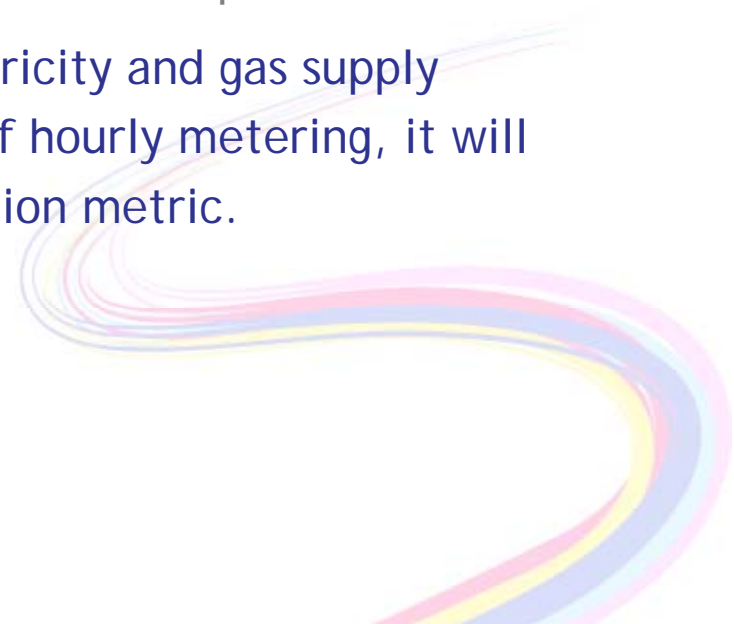
Voluntary meters

- The Early Action Metric rewards participants who voluntarily install half hourly electricity and gas AMR (remotely read) by 31 March 2011
- AMR measures gas and electricity supplies not covered by mandatory half hourly meters
- Voluntary AMR meters include:
 - dynamic pseudo settled half hourly meters
 - COMC from NHH to HH settled
 - electric AMR meters (PC 3 -8)
 - gas AMR meters



The Early Action Metric

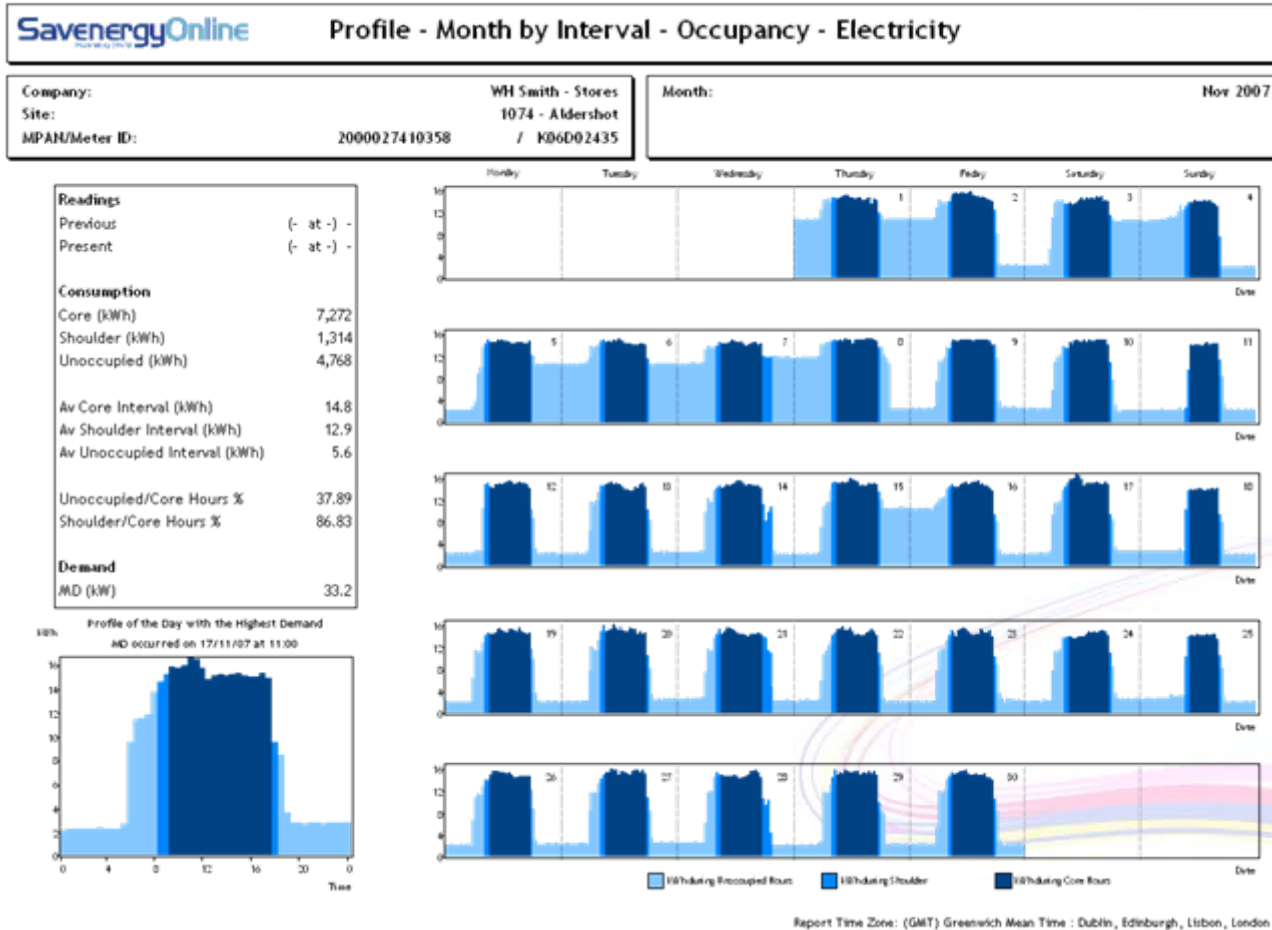
- The value of the reward is based on the percentage of emissions that are covered by voluntarily installed AMR metering at the end of March 2011.
- http://www.decc.gov.uk/en/content/cms/what_we_do/lc_uk/crc/user_guidance/user_guidance.aspx
- If an organisation has all its electricity and gas supply measured through mandatory half hourly metering, it will score 50 per cent in the early action metric.



1

BMS being overridden by early morning staff.

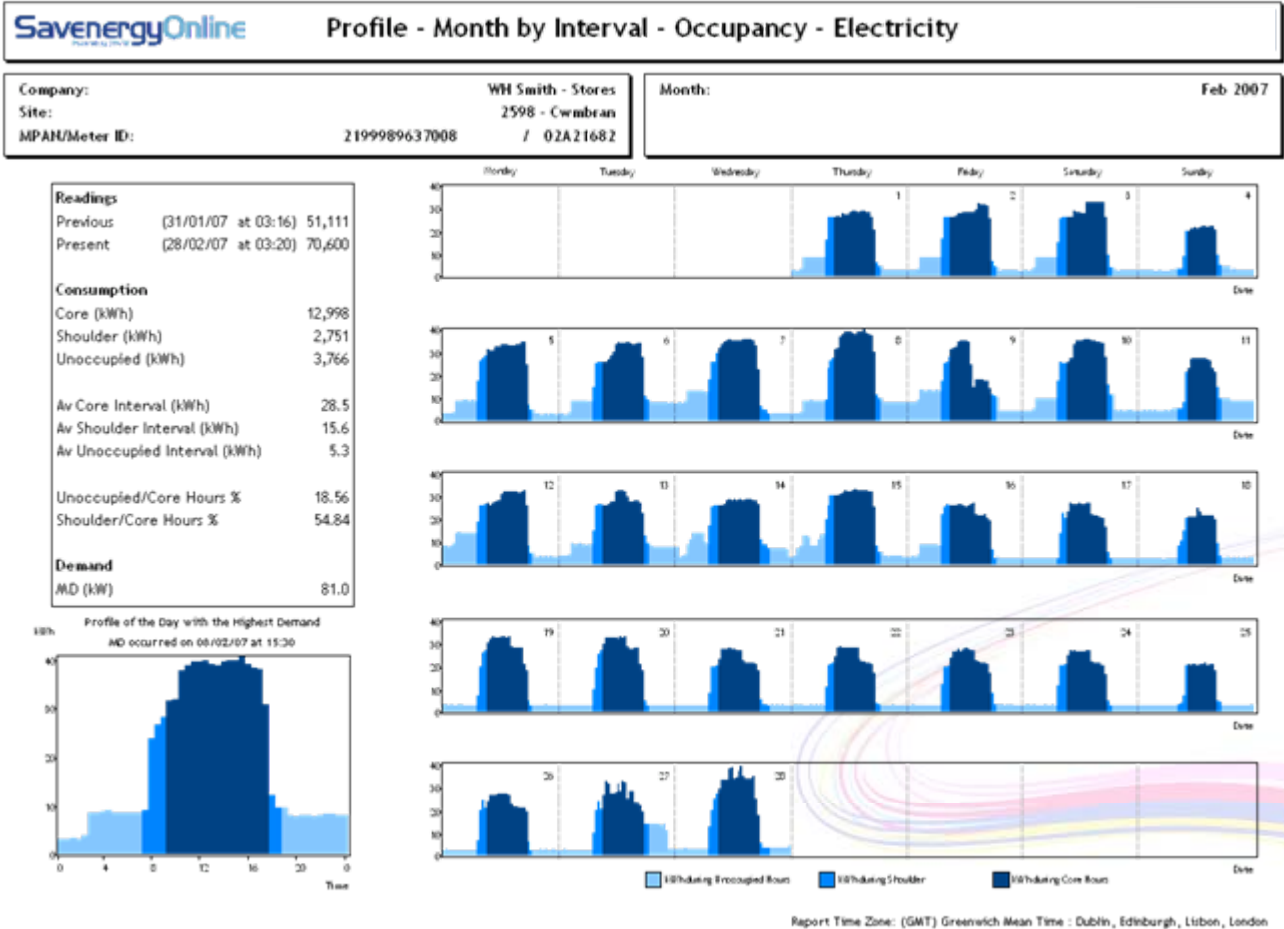
If no-one reset the override (which happened frequently) the plant and lighting stayed on 24/7.



2

Re-setting time switches produced significant savings.

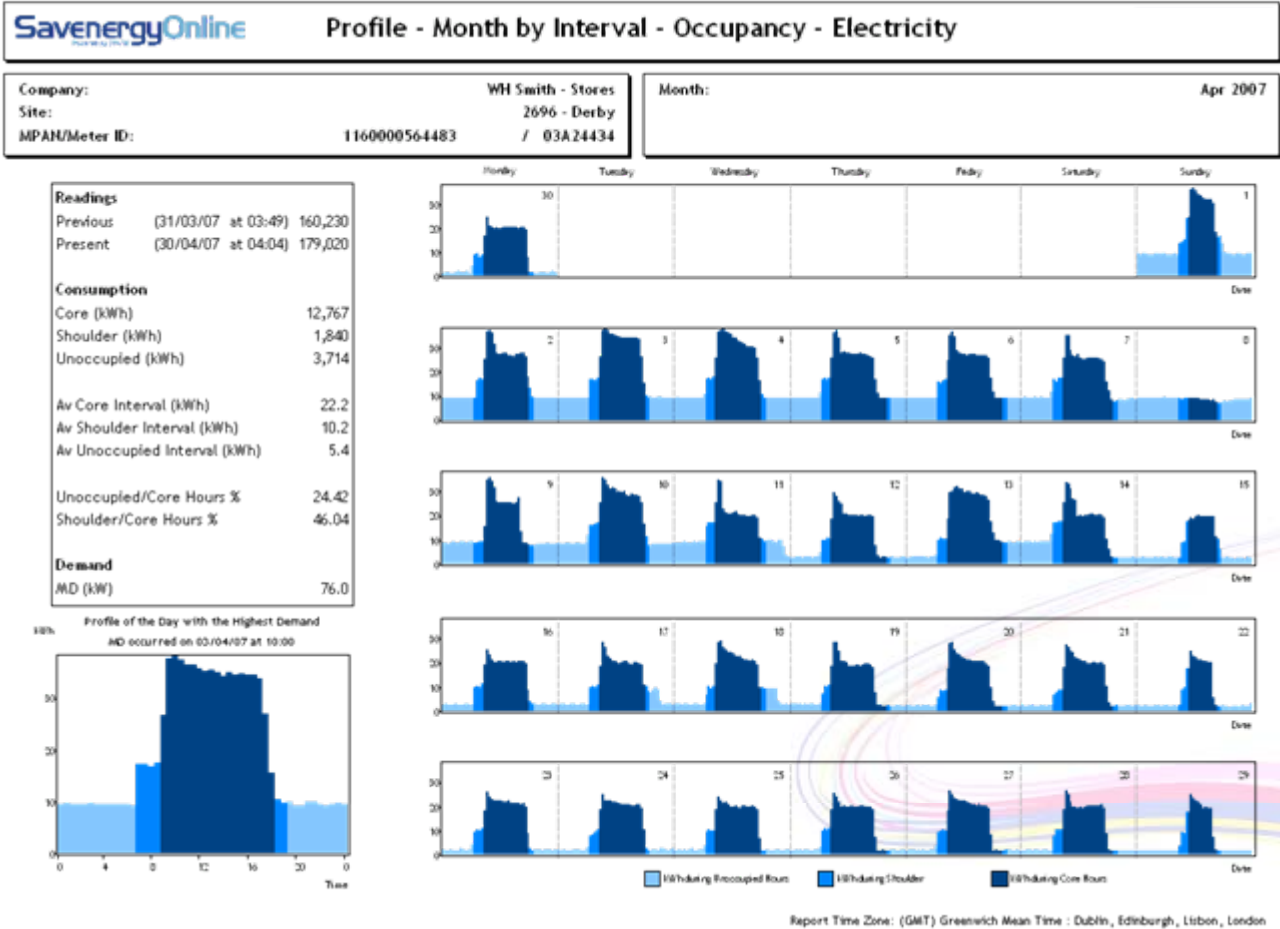
An energy audit found there was a time switch controlling the over door heaters that had been set incorrectly, allowing the heaters to run overnight. A second time switch was found to be controlling the off-sales ventilation plant.



3

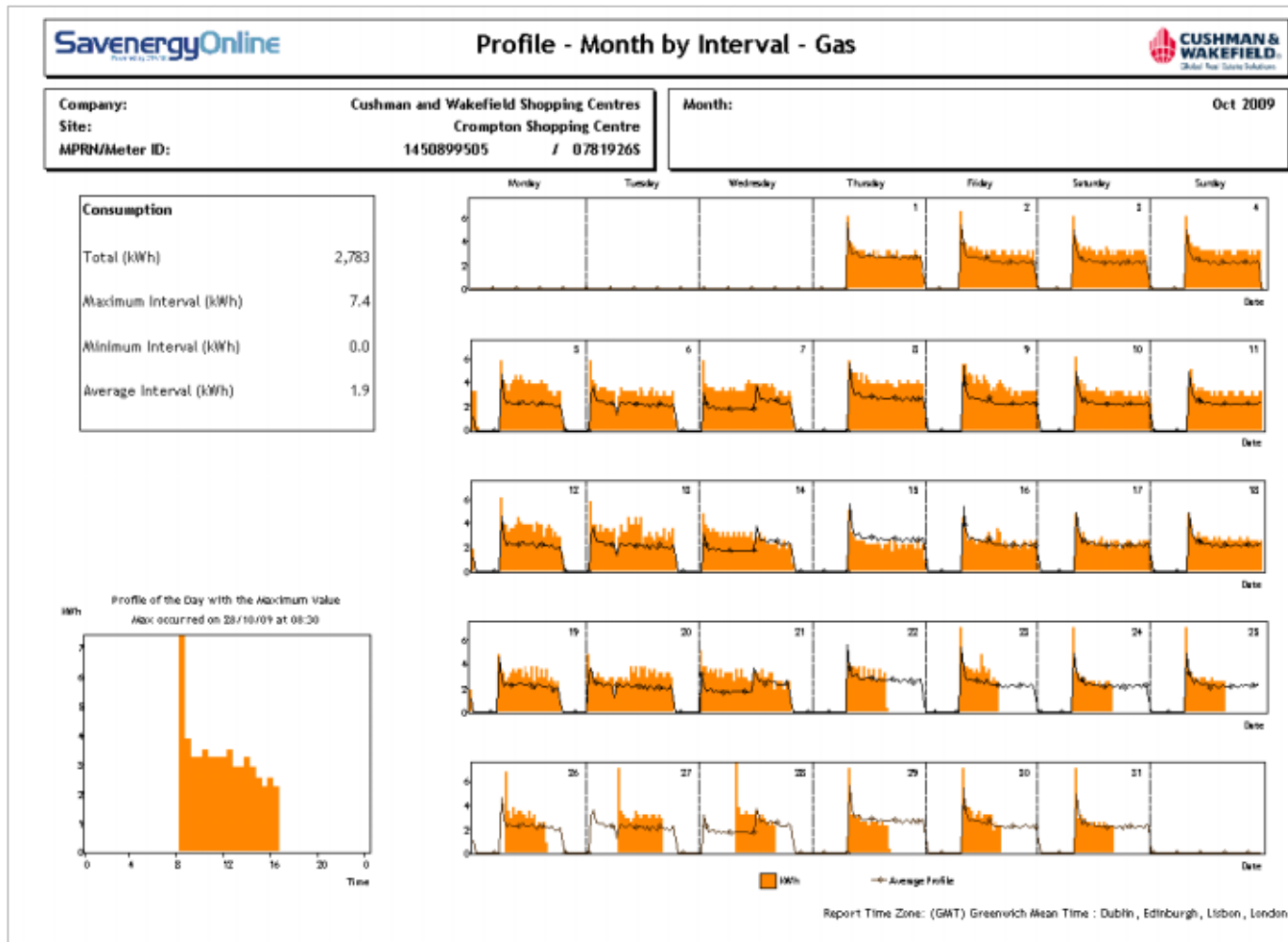
The lights were left on all night - in error.

The interface link between the intruder alarm and the building management system had never been installed.



4

Time clock incorrectly programmed during routine maintenance visit.



Conclusions

- Identify those meters that make up the 90% of total footprint emissions
- Prioritise the '90%' for AMR
- Continuous performance monitoring is the key to implementing an effective energy and carbon reduction programme
- To reduce your footprint and improve your league table standing, eliminating waste should be the No.1 priority in your action plan